



Offers Over £325,000

3 Bedroom Terraced House for sale
18 Burch Road, Northfleet, Gravesend



EweMove
SALES AND LETTINGS



Overview

* Guide Price £325,000* 3 Double bedroom property with an additional loft room, located close to the town centre for shops and commuting. This property has off street parking and a good sized garden to the rear with outdoor room.



Key Features

- Close to Town Centre
- Walking distance to Rosherville and Mayfield Schools
- Loft Room
- Good Transport links for Bus and Train
- Scenic Views of River Thames



A Spacious Family Home in a Prime Gravesend Location

Situated just moments from Gravesend Town Centre and the mainline train station, this property offers excellent access to local amenities and transport links. The area is known for its vibrant community and proximity to the River Thames, providing scenic views and leisure opportunities.

The home features two generous reception rooms, perfect for both relaxation and entertaining. The spacious kitchen is ideal for culinary enthusiasts and social gatherings, with direct access to a convenient shower room with a WC.

Upstairs, the first floor comprises three well-proportioned bedrooms and a family bathroom. A versatile loft space provides additional room, perfect for a home office or guest accommodation.

Outside, the easy-to-maintain rear garden offers a private outdoor retreat, complemented by a purpose-built outdoor room, ideal for a home office, studio, or extra storage.

With a total floor space of 137 sqm, this property presents a fantastic opportunity for families or investors seeking substantial living space, modern amenities, and a sought-after location in Gravesend. Its close proximity to the town centre and transport hubs makes it a must-see home.



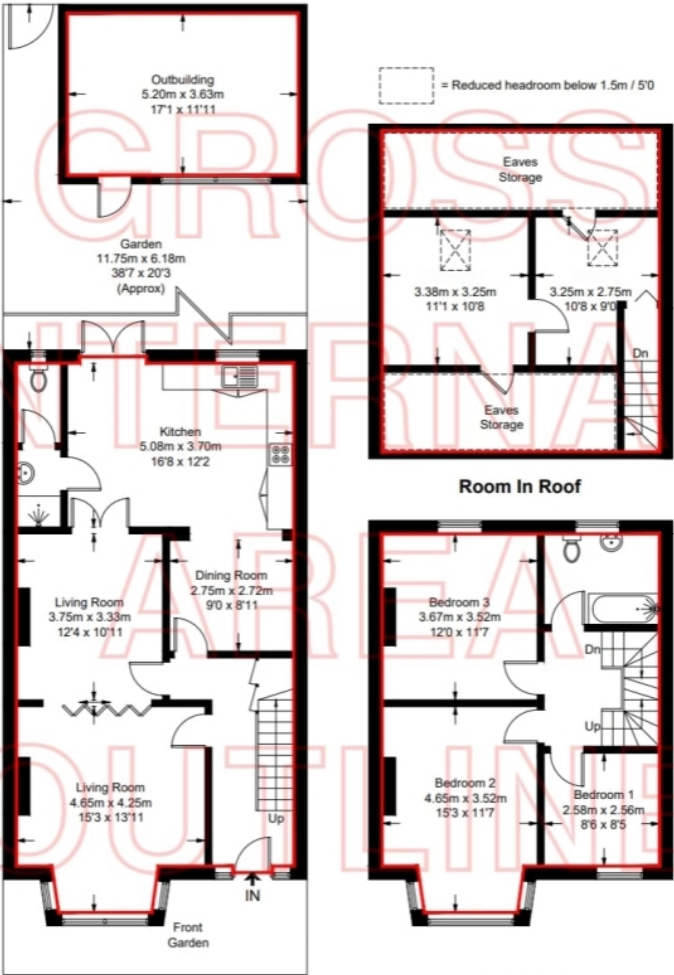
18 Burch Road, Northfleet, Kent, DA11 9NF

Approximate Gross Internal Area = 168.2 sq m / 1810 sq ft

(Including Eaves Storage)

Outbuilding = 19.0 sq m / 204 sq ft

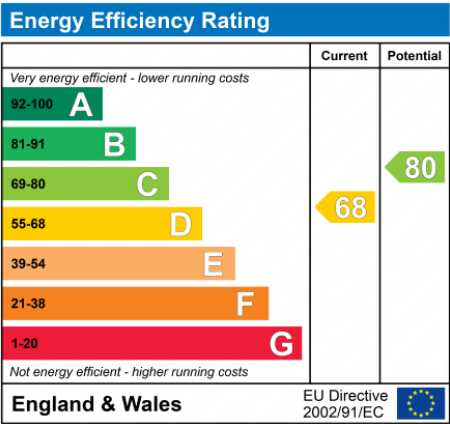
Total = 187.2 sq m / 2014 sq ft



Ground Floor

First Floor

This plan is for layout guidance only. Not drawn to scale unless stated. Windows and door openings are approximate. Whilst every care is taken in the preparation of this plan, please check all dimensions, shapes and compass bearings before making any decisions reliant upon them.
Fourlabs.co © 2025 (ID1180060)





Marketed by Ewemove Ebbsfleet Valley

01987 591 599 (24/7)
ebbsfleetvalley@ewemove.com



EweMove
SALES AND LETTINGS